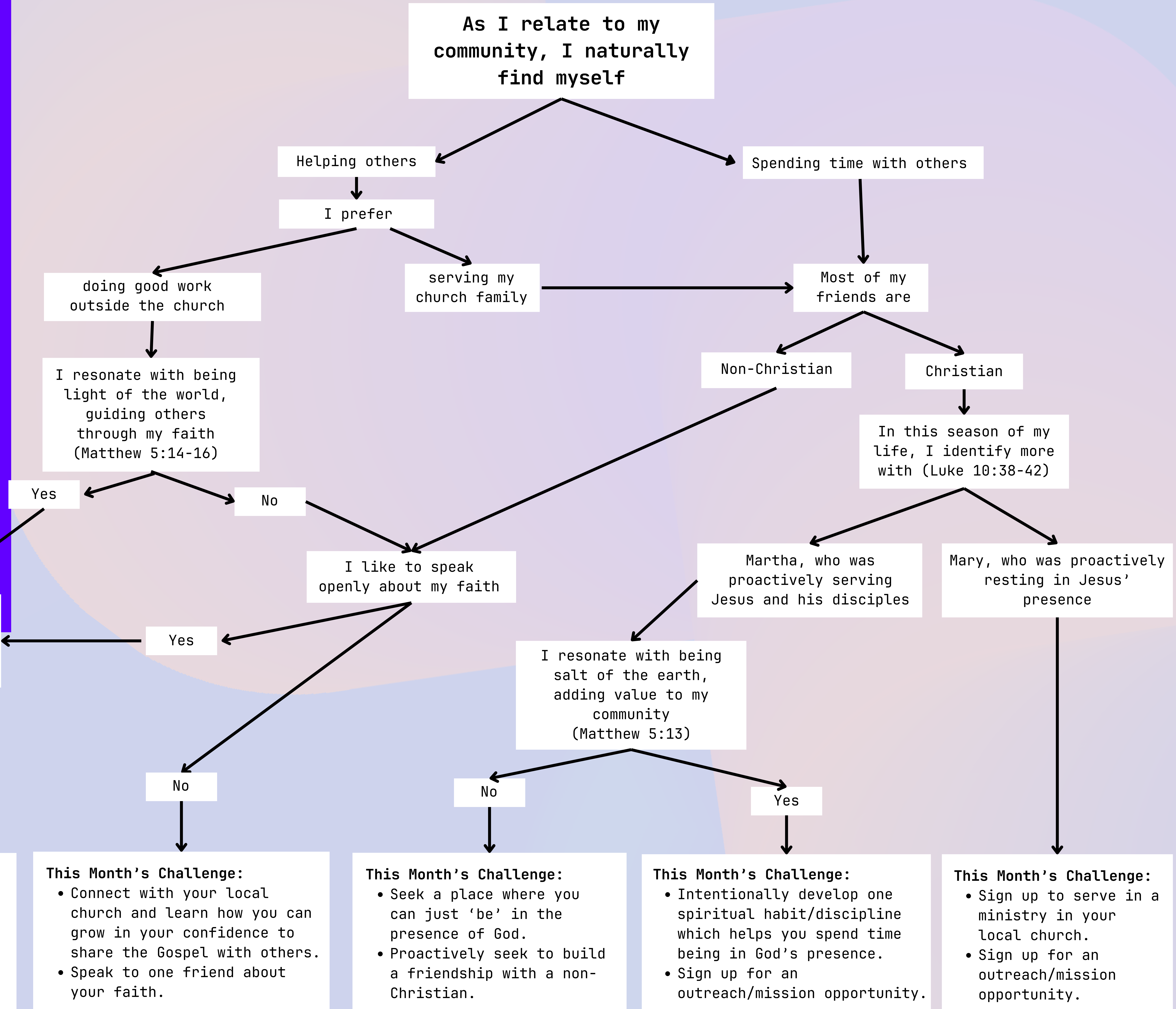


PERSONAL GROWTH ASSESSMENT

MISSIONAL COMMUNITY

How missional are you? Explore where you stand on the mission spectrum with our 'Being vs. Doing' decision tree, a reflective tool designed to assess and guide you into a more holistic expression of missional community.



This Month's Challenge:

- Intentionally seek out relational connections in your church community.
- Seek a place where you can just 'be' in the presence of God.

This Month's Challenge:

- Sign up for an outreach/mission program. Start exploring opportunities at your church or local organisations.

This Month's Challenge:

- Connect with your local church and learn how you can grow in your confidence to share the Gospel with others.
- Speak to one friend about your faith.

This Month's Challenge:

- Seek a place where you can just 'be' in the presence of God.
- Proactively seek to build a friendship with a non-Christian.

This Month's Challenge:

- Intentionally develop one spiritual habit/discipline which helps you spend time being in God's presence.
- Sign up for an outreach/mission opportunity.

This Month's Challenge:

- Sign up to serve in a ministry in your local church.
- Sign up for an outreach/mission opportunity.